

Claims Portal

A2A Token and Password Change





Recommended Approach:

The following slides will show you our recommended approach to handle the tokens during the daily activities.



Recommended Approach:



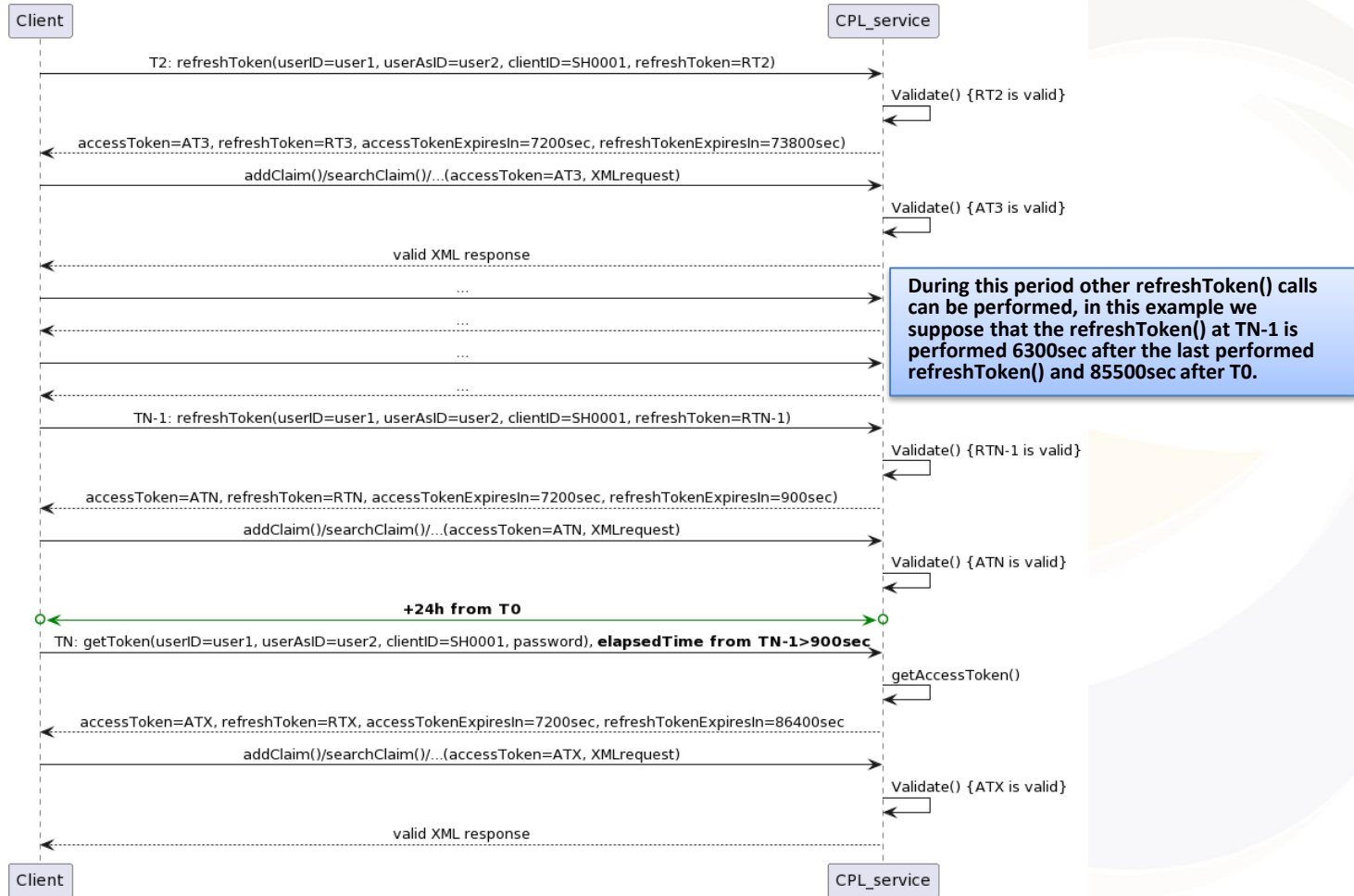


Recommended Approach:

	Action	Result
T0	getToken() with userID=user1, UserAsID=user2, clientID=SH0001, password	AT1, RT1 AT1 validity=7200sec RT1 validity=86400sec
Perform the call to Claims Portal using AT1		
T1	refreshToken() with userID=user1, UserAsID=user2, clientID=SH0001, refreshToken=RT1	AT2, RT2 AT2 validity=7200sec RT2 validity=80100sec
Perform the call to Claims Portal using AT2		



Recommended Approach:





Recommended Approach:

	Action	Result
T2	refreshToken() with userID=user1, UserAsID=user2, clientID=SH0001, refreshToken=RT2	AT3, RT3 AT3 validity=7200sec RT3 validity=73800sec
Perform the call to Claims Portal using AT3		
During this period other refreshToken() calls can be performed, in this example we suppose that the refreshToken() at TN-1 is performed 6300sec after the last performed refreshToken() and 85500sec after T0.		
TN-1	refreshToken() with userID=user1, UserAsID=user2, clientID=SH0001, refreshToken=RTN-1	ATN, RTN ATN validity=7200sec RTN validity=900sec
Perform the call to Claims Portal using ATN		
+24h from T0		
TN	getToken() with userID=user1, UserAsID=user2, clientID=SH0001, password Elapsed time from T-N1>900sec	ATX, RTX ATX validity=7200sec RTX validity=86400sec



Preparation to Go Live



Preparation to Go live – A2A Token and Password Change

24th January: GO LIVE DATE



NO PROCESS VERSION UPDATE



No retro-compatibility issues



Technical Documentation

- **TECH SPECS - DRAFT A2A interface:** describes the I/O of functions (WSDL file)
- **Tech Specs A2A interface final version release date 31st October**
- **A2A Release Notes DRAFT version :** describes the changes to the A2A
- **A2A Release Note final version release date 31st October**

Available on web site

<https://www.claimsportal.org.uk/developer/application-to-application-a2a-token-authentication-log-in-access/>



Integration endpoints parallel run

New endpoints and old ones are available in parallel from 07th of November.

	OLD ENDPOINT	NEW ENDPOINT
RTA	https://piptesta2a.crif.com/PIP.WS/PIPWS	https://piptesta2a.crif.com/PIP.WSTK/PIPWSTK
ELPL	https://piptesta2a.crif.com/ELPL.WS/ELPLWS	https://piptesta2a.crif.com/ELPL.WSTK/ELPLWSTK

The web URL has not changed:

→ <https://piptesta2a.crif.com/>



Integration sites and testing

The test site is available for users to test their development and changes to their API. It is not designed to handle high call volumes or performance testing.

If you use automated testing software you **must ensure** that the volume is kept to the minimum required to validate that your application is working correctly and you must not submit the same call more times than is necessary to complete your tests.

You must review the results and conduct further testing, if required.
Once your testing is completed you must stop the automated testing tool and ensure that you are no longer connected to the site.

Claims Portal monitor the usage of the site and may contact you if they believe that your testing is not compliant with these A2A specification and instructions



Integration sites and testing

- **A2A QUERIES to be directed to the Helpdesk**
 - **helpdesk@rapidclaimsettlement.org.uk**
 - **with e-mail subject “A2A TOKEN QUERY”**
 - You should complete the A2A Integration/Test Contact Us form on the web site and ensure that you provide all information requested and attach to your email. Including the following information:
 - XML request
 - XML response including the Trace returned in the error message.
- **CHECK YOUR TEST CREDENTIALS**
 - please check that your TEST credentials are enabled a couple of weeks or so before you start testing. If you need support to enable the credentials, Don't leave to last minute as it may create delays.